

# Directive Systems & Engineering

2702 Rodgers Terrace  
Haymarket, VA 20169-1628

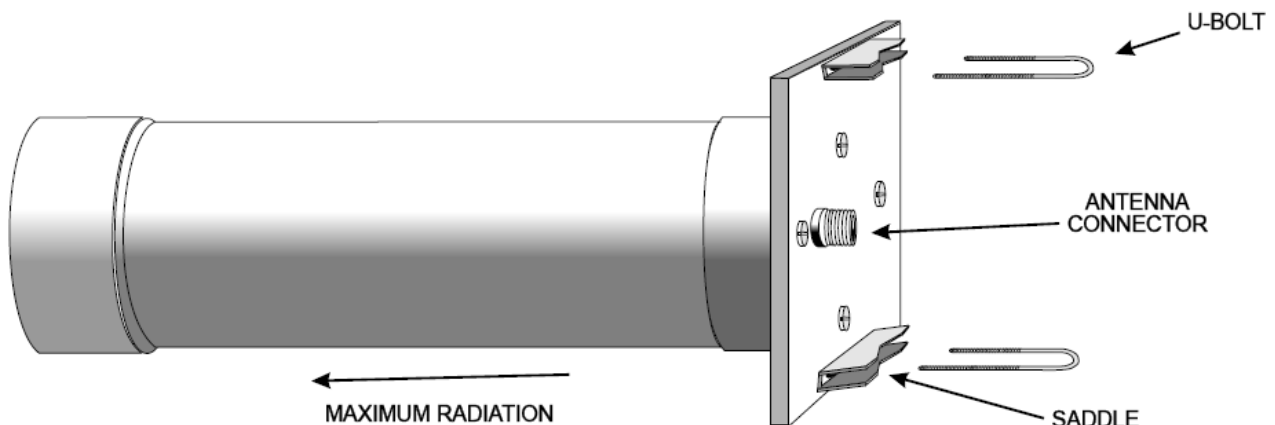
[www.directivesystems.com](http://www.directivesystems.com)

703-754-3876

## 1525-1560 MHz Circular Polarized Antenna, Model DSEH23-12

### SPECIFICATIONS

Frequency range:	1525-1560 MHz	Gain:	14.5 dBic
Polarization:	RHCP (Circular)	3 dB Beamwidth (Circular):	30°
Number of turns:	12	F/B ratio:	≥16 dB
Helix length:	16 inches	Maximum Power:	100 W average
Mast diameter:	2 in. max		
Weight:	5 pounds		
Connector:	Type-N female		



*Note: All hardware is Stainless Steel unless otherwise noted.*

**Anti-Seize Compound** - Apply a small amount of the supplied Anti-Seize Compound to the aluminum joints and to the threads of the U-Bolts to prevent galling.

**BEFORE INSTALLING YOUR NEW ANTENNA, PLEASE BE SURE TO READ THE ENCLOSED WARNING PAMPHLET.**

### ASSEMBLY INSTRUCTIONS

- 1) Unpack antenna and locate the U-bolt /Hardware package.
- 2) Install the U-bolts (2) on the 8" x 8" back mounting plate using the saddles, hex nuts and split lock washers provided. (See drawing above.)

- 3) Attach the antenna to your support mast. The antenna is right-hand circular and does not require any specific orientation for maximum reception, other than to point it in the correct direction. Tighten the U-bolts to your mast, but take care not to crush your support mast.
- 4) Attach the feed line and tape it to the mast. The connector should be sealed with electronic grade RTV or equivalent.
- 5) The antenna SWR has been adjusted at the factory for less than 1.5:1. There are no adjustments to be made to the antenna. Maximum radiation is in the direction of the long axis of the antenna and away from the rear plate.

### **Directive Systems Warranty Policy**

All Directive Systems antennas are built with the finest materials available. We take great pride in building a quality product that will give years of good service and performance. If there is a defect in materials or workmanship within 90 days of purchase, Directive Systems will repair or replace the defective part, free of charge, to the original purchaser. **DO NOT RETURN ANYTHING WITHOUT PRIOR AUTHORIZATION FROM DIRECTIVE SYSTEMS.** Please contact us either by phone or email describing the problem and we will work to resolve it.

If, after examining a new antenna you received, you are not satisfied, contact us immediately for return authorization and refund. **ANY ANTENNA THAT HAS BEEN MODIFIED WILL BE SUBJECT TO A RESTOCKING CHARGE. IF AN ANTENNA IS SO MODIFIED AS TO MAKE IT UNUSABLE, DIRECTIVE SYSTEMS RESERVES THE RIGHT TO REFUSE TO ACCEPT THE ANTENNA FOR RETURN.**