

Directive Systems & Engineering

2702 Rodgers Terrace
Haymarket, VA 20169-1628

www.directivesystems.com

703-754-3876

K1JX DESIGNED 5-ELEMENT 50-MHZ YAGI, DSEJX5-50

INTRODUCTION

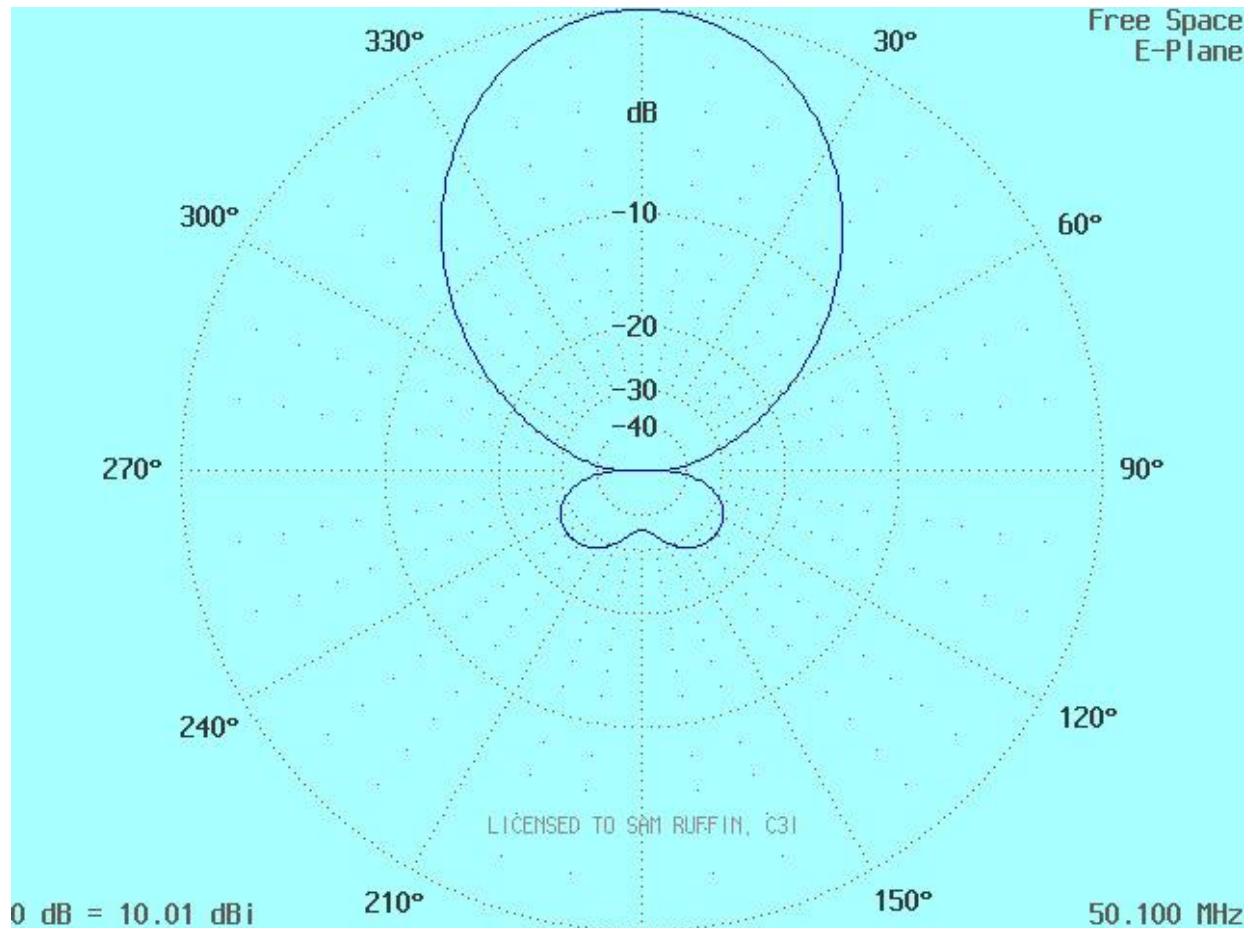
The Directive Systems **DSEJX5-50** is a 5 element Yagi-Uda antenna design by Clark Green, **K1JX**. The design provides optimum performance for a $.625 \lambda$ boom-length antenna, while addressing construction details of importance to the first-time as well as experienced builder. Design issues such as selecting the grade of aluminum used for boom and element material to assure harsh-environment survivability, use of stainless-steel boom hardware and element-assembly hardware, and use of commonly available hand tools to aid in ease of construction, have been considered in producing an antenna kit which is complete, satisfying to build, and gives the builder one of the finest 6-meter antennas available.

ELECTRICAL SPECIFICATIONS

Calculated gain:	10.1 dBi
E-plane 3 dB beam width:	55 degrees
H-plane 3 dB beam width:	73 degrees
SWR 1.5:1 Bandwidth:	1 MHz
Sidelobe attenuation	
1st E-plane:	-24.7 dB
1st H-plane:	-18.3 dB
SWR 50.1 MHz	Less Than 1.5:1 typical
Stacking distance for optimum gain-to-noise ratio	
E-plane:	144"
H-plane:	144"
F/B ratio:	25.5 dB
Impedance:	50 ohms nominal
Maximum Power:	1500 Watts

MECHANICAL SPECIFICATIONS

Length:	12 ft
Turning radius:	8 ft
Boom-sections/elements	6063-T832 aluminum
	1.375" x .058" wall with .058" insert
Element sections:	5/8" & 1/2" x .058" wall
T-match arms:	3/8" x .058" wall
All stainless steel hardware.	
Surface area:	~ 2 ft ²
Wind survival:	90+ mph
Maximum mast size:	2.0" OD – larger on Special orders
Coax connector:	Weatherproof N-type
Assembled weight:	13 lbs



DSEJX5-50 E-Plane Polar Plot

**BEFORE INSTALLING YOUR NEW ANTENNA, PLEASE BE SURE
TO READ THE ENCLOSED WARNING PAMPHLET.**

CAUTION: *While we strive to remove all burrs from all machined parts, there is always the possibility of sharp edges. We strongly suggest checking the edges and use a fine file, or 400 grit sandpaper, to remove any burrs that may have been left.*

ASSEMBLY TIPS AND NOTES

TOOLS

Assembly of your antenna kit requires the following tools.

12' or greater tape measure

#2 Phillips screwdrivers

Flat blade screwdriver or 5/16" nut driver for hose clamps

7/16" wrench

Permanent marker (Sharpie)

Pliers

ASSEMBLY TIPS

1. Read an entire section before performing each assembly operation.
2. This Manual contains assembly drawings and other assembly-related information such as element lengths. Drawings are referred to by **Figure** number; charts and lists are referred to by **Table** number. Continue using the same Table or Figure number until told to use a different one.
3. All of the information needed to successfully complete the construction of an antenna kit is contained in this Manual. Keep this Manual in a safe place so that it will be available should you require it for future reference.
4. When tightening hardware **FOLLOW INSTRUCTIONS – DO NOT OVER TIGHTEN!** Deformation of the boom may occur, causing misalignment of elements.
5. Orient all hardware as instructed in each assembly step and as may be shown in an associated figure.

Elements will be called out by their position on the boom, R = reflector, DE = driven element and D-element number = director. The director's number is relative to the DE element with D-1 nearest the DE. Director elements are identified by number on one end of an element.

PARTS LIST

Note: All hardware is Stainless Steel unless otherwise noted.

Unpack the antenna kit and check each part against the following list. Do not throw any packing material away until the antenna is completely assembled and ready for final installation. Some parts may be packed inside boom sections.

The box in which the antenna was shipped contains the following items:

2	6' x 1 3/8" Boom sections
1	2' x 1 1/4" Boom splice
1	Boom to mast plate
1	Element pack with 10 element halves
5	3/4" Element couplers
2	49" x 3/8" T-arms
1	Pre-assembled connector bracket
1	Balun
1	Anti Seize Compound

Parts Bag 1 – Element hardware

<u>Qty</u>	<u>Item</u>
5	1 1/2" U-bolts
5	Element saddles
10	1/4" Locknuts

Parts Bag 2 – Boom to Mast hardware

<u>Qty</u>	<u>Item</u>
2	1/4" x 1 3/4" U-bolts
4	1/4" Nuts
4	1/4" Lock washers
4	1/4" Flat washers
2	5/16" U-bolts
4	5/16" Nuts
4	5/16" Lock washers
4	5/16" Flat washers

Parts Bag 3 – Misc.

<u>Qty</u>	<u>Item</u>
2	1 1/2" Hose clamps
2	T-arm shorting bars
4	8-32 x 1 1/4" Machine screws
5	#8 Nuts
3	#8 Internal tooth lock washers
4	#8 Split lock washers
2	6-32 x 1/2" Machine screws
5	#6 Internal tooth lock washers
10	1/2" Element End caps
2	3/8" T-arm End caps
2	1 3/8" Black End caps
4	Cable ties
1	Assembly Manual

Anti-Seize Compound - Apply a small amount to the aluminum joints to prevent the aluminum from oxidizing and to the threads of the U-Bolts to prevent galling.

ANTENNA ASSEMBLY

In the following steps, apply a small amount of the supplied Anti-Seize Compound to the joints:

1. Locate the two 1 3/8" boom sections and the 1 1/4" boom splice. Insert the boom splice in one of the boom halves in the end with the slits. Insert it half way into the boom. Using a hose clamp from parts bag #3, slide it over the end of the boom and tighten it securely over the slits. Now, slide the second boom section over the exposed portion of the boom splice starting with the end with slits in it. Use a second hose clamp to secure the connection.
2. Using a permanent marker, refer to Figure 3 and mark the boom where each element mounts. All measurements are referenced from the reflector end of the boom.
3. From parts bag #2, assemble the boom to mast plate using two 1/4" U bolts, 1/4" flat washers, lock washers and nuts. Slide the boom to mast plate over the boom from the reflector side and position it about 55" from the rear of the boom. Tighten the four 1/4" nuts.
4. Starting with the reflector elements (REF), slide the two halves into the element joiner until you see the holes in the elements line up with the holes in the element joiner. Pass a U-bolt from parts bag #1 over the boom, through an element saddle and then through the holes in the element. Align this assembly on the rear of the boom so that the U-bolt covers the mark you made in step #2. Install two 1/4" locknuts and tighten. Make sure the element is perpendicular to the boom to mast plate.
5. Similarly, assemble the three directors, D1, D2 and D3 and attach them to the boom at the appropriate marks on the boom.
6. The driven element (DE) mounts the same way; however, the connector bracket sits between the element and the element to boom saddle.

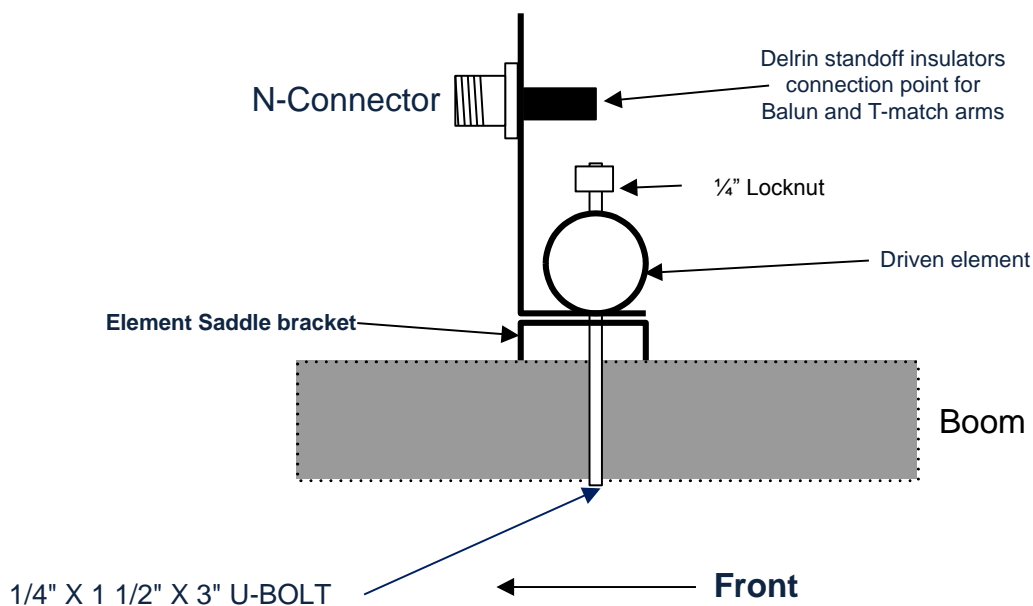


Figure 1

7. Locate the two 49" x 3/8" T-arms and the balun, and from bag #3 locate the T-arm shorting bars, the #8 hardware and the #6 hardware. The connector bracket came with the Delrin standoffs already installed. Using a 6-32 X 1/2" screw, place an internal tooth lock washer on the screw and put the screw through one of the balun lugs connected to the center conductor. Next, place a second internal tooth lock washer on the screw, then insert the screw through the lug from the coax connector. Last, place a third internal tooth lock washer on the screw, then insert through one of the tee arms and screw it in to the Delrin standoff insulator. Do not over tighten the screw as you can strip the threads in the standoff insulator.
8. Slide the T-arm shorting bar over the end of the driven element and the T-arm. The shorting bar should be about 13" from the outer end of the driven element. Install 8-32 X 1 1/4" screws through the two holes in the shorting bars and install a lock washer and nut. Tighten both the shorting bar screws. Attach the other T-arm in a similar fashion, but without the wire coming from the connector and locate the shorting bar about 13" from the end of the other driven element half.
9. Connect both ground wires from both ends of the balun to the grounding screw just below the connector. Place a lock washer on the stud first, then both lugs, another lock washer and then the nut and tighten. Refer to Figure 2 for details.
10. Dress the balun along the boom or coil it as pictured. Securely tape the balun to the boom or use cable ties as pictured.

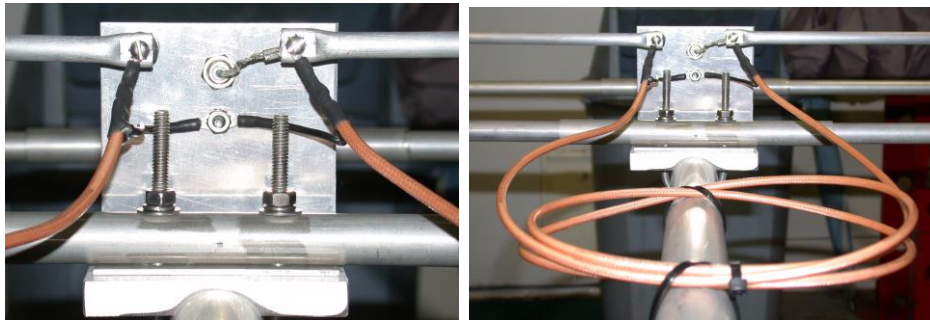


Figure 2

11. Install supplied caps on ends of tubing.
12. Assemble the boom to mast plate next using two 2" U-bolts, saddles, 5/16" lock washers and nuts from parts bag #2. Position it on the boom just ahead of D2. The center of the boom-to-mast plate is approximately 55" from the Reflector end of the boom. Attach a piece of feedline that is similar to what you plan to use to determine the final balance point. Once the balance point is determined, tighten the U-bolts securely.
13. This completes the antenna assembly. Using the dimensions shown, the SWR below 50.4 MHz will be 1.5:1 or less. If you wish to improve the match, support the antenna at least one wavelength above the ground (about 20 feet). Check the match using a directional wattmeter or antenna analyzer. You can move the shorting bars in or out to change the match on the antenna. Always use coax in multiples of one half wavelength when testing to ensure you are seeing the real match of the antenna.

DO NOT, UNDER ANY CIRCUMSTANCES, APPLY ANY TYPE OF SEALANT OR COATING TO THE DRIVEN ELEMENT, T-ARMS OR CONNECTOR ASSEMBLY, OTHER THAN KRYLON® CLEAR COAT. ANY OTHER COATING WILL ADVERSELY AFFECT THE SWR AND VOID YOUR WARRANTY.

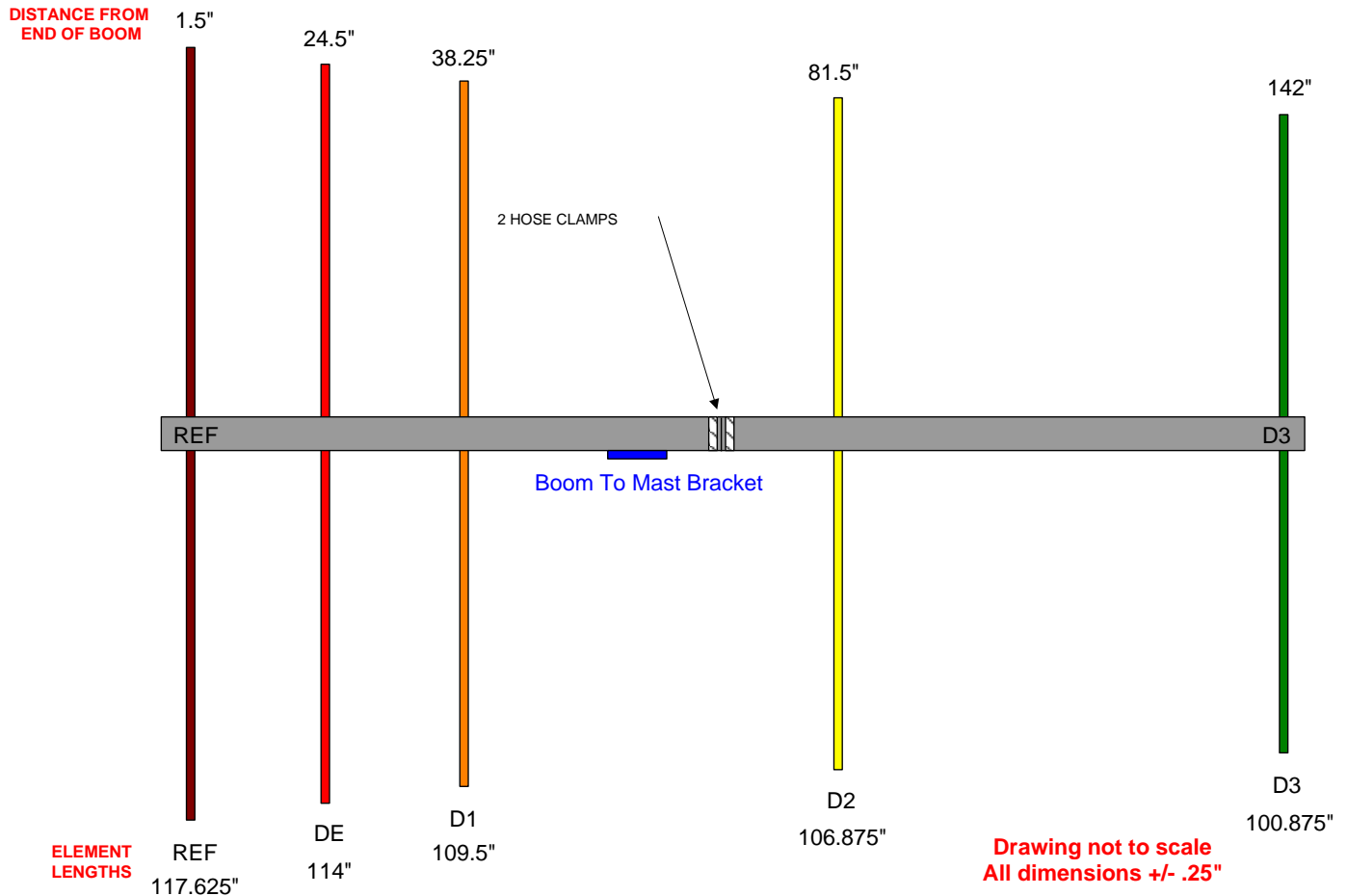


Figure 3

Directive Systems Warranty Policy

All Directive Systems antennas are built with the finest materials available. We take great pride in building a quality product that will give years of good service and performance. If there is a defect in materials or workmanship within 90 days of purchase, Directive Systems will repair or replace the defective part, free of charge, to the original purchaser. **DO NOT RETURN ANYTHING WITHOUT PRIOR AUTHORIZATION FROM DIRECTIVE SYSTEMS.** Please contact us either by phone or email describing the problem and we will resolve your problem.

If, after examining a new antenna you received, you are not satisfied, contact us immediately for return authorization and refund. **ANY ANTENNA THAT HAS BEEN MODIFIED WILL BE SUBJECT TO A RESTOCKING CHARGE. IF AN ANTENNA IS SO MODIFIED AS TO MAKE IT UNUSABLE, DIRECTIVE SYSTEMS RESERVES THE RIGHT TO REFUSE TO ACCEPT THE ANTENNA FOR RETURN.**