



# Directive Systems & Engineering

2702 Rodgers Terrace  
Haymarket, VA 20169-1628

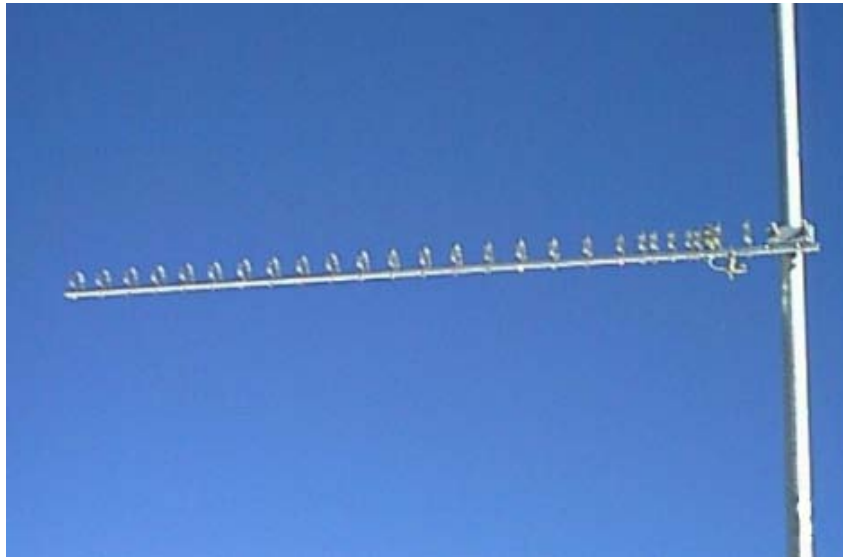
[www.directivesystems.com](http://www.directivesystems.com)

703-754-3876

## 2.3-2.4 GHz Loop Yagi (Rear Mount), Model DSE1327LYRM

### SPECIFICATIONS

Frequency range:	2.3 to 2.4 GHz	Gain:	$\cong 18.5$ dBi
Number of elements:	27	3 dB Beamwidth	
Boom length:	48 inches	(E plane):	$\cong 20^\circ$
Boom diameter:	0.5 inches	F/B ratio:	$\geq 20$ dB
Mast diameter:	1 1/2 in. max	Maximum Power:	400 W average
Weight: (assembled)	1 pound assembled	Stacking distance:	15 in. vertical (H)
Connector:	Type-N female		16 in. horizontal (E)



### ASSEMBLY INSTRUCTIONS

- 1) Unpack the antenna and locate the hardware package. The boom is in one piece and requires no assembly. Observe that the boom to mast bracket is installed on the rear of the boom.
- 2) Attach the boom to mast angle bracket to the boom with the 8-32 x 1" hardware provided. Install the U-Bolt in the angle bracket. Be careful to leave room for the feedline to attach to the connector assembly.
- 3) Attach the feedline and tape it to the bottom of the boom and mast. The connector should be sealed with silicone RTV or equivalent.

- 4) Straighten any misaligned elements and re-tighten if necessary.
- 5) The antenna SWR has been adjusted at the factory for less than 1.5:1 at 2304 MHz. It should be less than 2:1 from 2300 to 2400 MHz. Additional tweaking can be accomplished by changing the shape of the driven element slightly and by adjusting the distance between the driven element and R1 and D1. R1 is the reflector closest to the driven element.
- 6) If antennas are to be stacked, see "Instructions for Stacking Loop Yagis".

### **Directive Systems Warranty Policy**

All Directive Systems antennas are built with the finest materials available. We take great pride in building a quality product that will give years of good service and performance. If there is a defect in materials or workmanship within 90 days of purchase, Directive Systems will repair or replace, free of charge, the defective part. **DO NOT RETURN ANYTHING WITHOUT PRIOR AUTHORIZATION FROM DIRECTIVE SYSTEMS.** Please contact us either by phone or email describing the problem and we will work to resolve it. If, after examining a new antenna you received, you are not satisfied, contact us immediately for return authorization and refund. **ANY ANTENNA THAT HAS BEEN MODIFIED WILL BE SUBJECT TO A RESTOCKING CHARGE. IF AN ANTENNA IS SO MODIFIED AS TO MAKE IT UNUSABLE, DIRECTIVE SYSTEMS RESERVES THE RIGHT TO REFUSE TO ACCEPT THE ANTENNA FOR RETURN.**