

Directive Systems & Engineering

2702 Rodgers Terrace
Haymarket, VA 20169-1628

www.directivesystems.com

703-754-3876

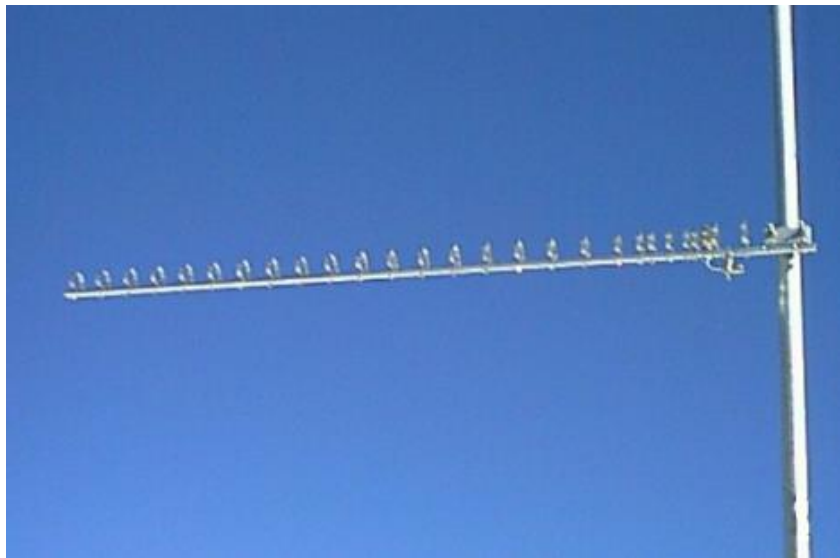
13cm Loop Yagi (Rear Mount), Model DSE1327LYRM

SPECIFICATIONS

Frequency range:	2.3 to 2.4 GHz	Gain:	$\cong 18.5$ dBi
Number of elements:	27	3 dB Beamwidth (E plane):	$\cong 20^\circ$
Boom length:	48 inches	F/B ratio:	≥ 20 dB
Boom diameter:	0.5 inches	Maximum Power:	400 W average
Mast diameter:	1 1/2 in. max	Stacking distance:	15 in. vertical (H) 16 in. horizontal (E)
Weight: (assembled)	1 pound assembled		
Connector:	Type-N female		

Note: All hardware is Stainless Steel unless otherwise noted.

Anti-Seize Compound - Apply a small amount of the supplied Anti-Seize Compound to the aluminum joints and to the threads of the U-Bolts to prevent galling.

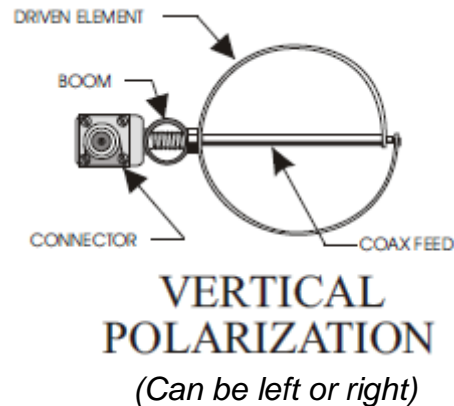


**BEFORE INSTALLING YOUR NEW ANTENNA, PLEASE BE SURE
TO READ THE ENCLOSED WARNING PAMPHLET.**

ASSEMBLY INSTRUCTIONS

- 1) Unpack the antenna and locate the hardware package. The boom is in one piece and requires no assembly. Observe that the boom to mast bracket is installed on the rear of the boom.

- 2) Straighten any misaligned elements and tighten hardware if necessary. **But do not touch R1, DE or D1, as these have been factory set for minimum SWR.**
- 3) Insert U-Bolt into rear mount bracket. Note that the bracket can be installed for either vertical or horizontal polarization. (See drawings below)



- 4) Attach the feed line, and tape it to the mast. The connector should be sealed with electronic grade RTV or equivalent.
- 5) The antenna SWR has been adjusted at the factory for less than 1.5:1. Additional tweaking can be accomplished by adjusting the distance between the driven element and R1 and D1, or by adjusting the shape of the driven element. **NOTE: Do not attempt this adjustment unless the proper equipment and qualified personnel are available.**
- 6) If antennas are to be stacked, see "Instructions for Stacking Loop Yagis".

DO NOT, UNDER ANY CIRCUMSTANCES, APPLY ANY TYPE OF SEALANT OR COATING TO THE DRIVEN ELEMENT, T-ARMS OR CONNECTOR ASSEMBLY, OTHER THAN KRYLON® CLEAR COAT. ANY OTHER COATING WILL ADVERSELY AFFECT THE SWR AND VOID YOUR WARRANTY.

Directive Systems Warranty Policy

All Directive Systems antennas are built with the finest materials available. We take great pride in building a quality product that will give years of good service and performance. If there is a defect in materials or workmanship within 90 days of purchase, Directive Systems will repair or replace the defective part, free of charge, to the original purchaser. **DO NOT RETURN ANYTHING WITHOUT PRIOR AUTHORIZATION FROM DIRECTIVE SYSTEMS.** Please contact us either by phone or email describing the problem and we will work to resolve it.

If, after examining a new antenna you received, you are not satisfied, contact us immediately for return authorization and refund. **ANY ANTENNA THAT HAS BEEN MODIFIED WILL BE SUBJECT TO A RESTOCKING CHARGE. IF AN ANTENNA IS SO MODIFIED AS TO MAKE IT UNUSABLE, DIRECTIVE SYSTEMS RESERVES THE RIGHT TO REFUSE TO ACCEPT THE ANTENNA FOR RETURN.**